



alphaJET.

Continuous Inkjet (CIJ) - Uncompromising reliability coding with an outstanding value for money.

For over 50 years Koenig & Bauer have been developing and manufacturing high quality coding technology products. Their focus is on first-class quality, outstanding performance and all this in combination with unbeatable reliability.

Contactless coding and marking with continuous Inkjet (CIJ) is ideal, when speed and legibility of the characters are important for applying variable dates directly at the production line.

In addition to precise printing results, alphaJET printers offer you a very high degree of reliability in everyday production. Perfectly matched inks ensure the quality for your application.

Every industry has its own requirements for product marking and technology.

Ongoing digitalisation and responsibly-minded sustainability are always in focus.

The Koenig & Bauer Coding portfolio offers a choice of models to meet your needs in every application to fulfil your individual coding and marking requirements.



alphaJET.

Versatile, no matter which industry.



Food and Sweets

Mark your product plastic packaging, tinfoil, cardboard or film, with a current date, batch number and codes – according to your wishes. If required, simply add your individual promotion.



Beverages and Dairy

No matter whether you pack in glass, PET, cans, paper, composite packaging, foil or bags: You will obtain a permanent and high-contrast coding.



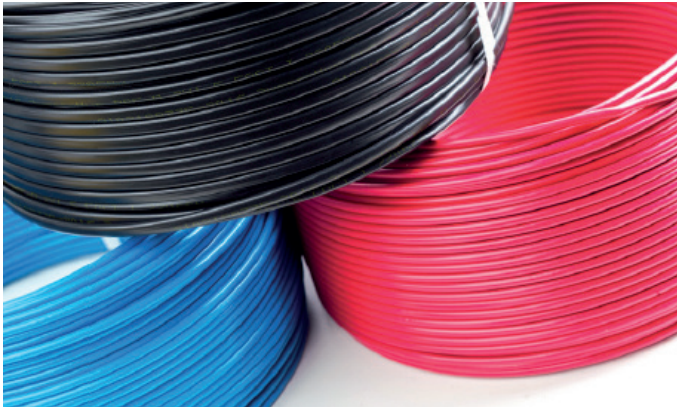
Cosmetics, pharmaceuticals and drugstore products

Designs and high-quality graphic compositions are printed accurately and precisely, also on glass and plastic.

alphaJET.

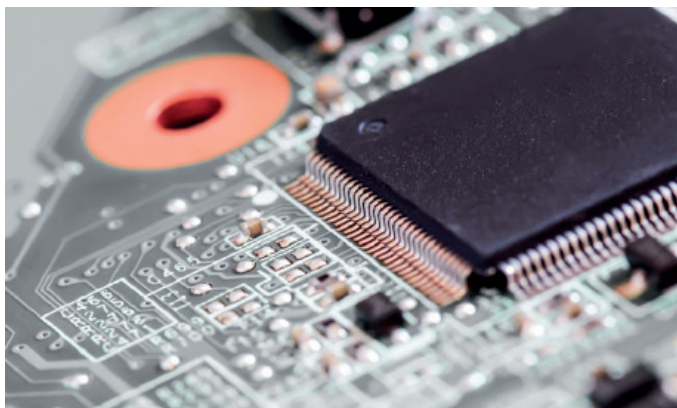
Solutions for materials and surfaces.

alphaJET continuous inkjet printers mark perfectly in all industries, on a wide variety of materials and surfaces.



Cable and tubes

Regardless of the environmental conditions, you can mark cables, pipes, wires or hoses, clearly and legibly; even at very high speeds. We offer you high-contrast inks in various colours and the best adhesive properties for your application.



Electronics and components

Semiconductors, sensors, terminals, connectors, printed circuit boards, etc. – Mark your product in detail with a company logo, batch number, 1D or 2D codes for traceability, quality assurance and legal specifications.



Automotive

Datamatrix code, QR code, logo and other data in excellent readability and sharpness. Protect original products from counterfeiting. Get a clear identification by means of a precise marking.

alphaJET.

Facts.

Thanks to simple, intuitive operation and intelligent software solutions, you get the best performance and gain around **+ 20 % productivity**

From high-quality materials in a modern, quality-assured production, coding systems are built according to the latest state of the art with an **uptime > 99 %**

Achieve the lowest consumption on the market, minimum operating costs and absolutely calculable follow-up costs **> 27% savings**

Compared to the average market level.

Do you want to make the most of savings potentials?

The alphaJET has the most efficient solvent recovery system RESOLVE Ultra. This saves you money every day. Clever financing solutions (e.g. rental or pay per code) and well thought logistics and service concepts increase your savings potential.

You require perfect start-stop behaviour from your marking device?

The combination of optimised nozzle closure, nozzle flushing and head heating form the Smart Start Technology integrated in the alphaJET5. Even if your printer is in stand-by mode for a longer period of time, intermediate startup or intensive cleaning processes are not necessary before restarting. This saves valuable time.



In a nutshell.

You want more colour contrast for your coding?

Operate your alphaJET inkjet with pigmented ink. A large ink portfolio, from high-contrast to food grade to well adherent ink for challenging materials, the selection has the right answer for your requirements.

Are your company's production facilities located internationally?

The alphaJET does not only print in other languages, its colour touch display can be easily adapted to many language variants (e.g. Arabic, Cyrillic, Chinese and many more).

The marking should not lead to a loss of quality of the typeface even with increasing production?

The reliable alphaJET printers have been the fastest continuous inkjet printers on the market for years and are ready for your production increase.

Is simple integration / control important to you?

The alphaJET has the matching interfaces to be easily connected to your machinery. Its smart integration offers you all possibilities for the future. Incidentally, you can also centrally operate, monitor and control all alphaJET printers with the modular PC software code-M and even verify the print image in real time with print & check.

alphaJET.

Technical specifications.



	alphaJET mondo	alphaJET ⁵ HS	alphaJET ⁵ SP	alphaJET ⁵ X	alphaJET ⁵ X-FP
Performance					
Line speed max.	780 m/min	1.300 m/min	1.300 m/min	800 m/min	950
Line speed at 2,5 mm character width	385 m/min	700 m/min	695 m/min	400 m/min	460
Max. lines	5	4	5	5	8
Max. pixels	32	24	32	32	48
Print head					
Nozzle size	62 µm	50 µm	42 µm	62 µm	55 µm
Active Ink Flow	-	✓	✓	✓	✓
Smart Start Technology	-	✓	✓	✓	✓
Nozzle closure	-	✓	✓	✓	✓
Supply hose length	3 m	4 m	4 m	4 m	6 m
Ink					
Standard	✓	✓	✓	✓	✓
High-contrast	✓	✓	✓	✓	✓
Special	✓	✓	✓	✓	✓
Operation					
Touchscreen	8,4"	10,4"	10,4"	10,4"	10,4"
Camera interface	✓	✓	✓	✓	✓
code-M	✓	✓	✓	✓	✓
Managed Services	✓	✓	✓	✓	✓
Special software	-	✓	✓	✓	✓
Cooling function	-	✓	✓	✓	✓
RE-SOLVE Ultra*	✓	✓	✓	✓	✓
Dimensions (H x W x L; mm)					
Housing	455 x 350 x 290 18 kg	592 x 320 x 320 23 kg	592 x 320 x 320 23 kg	620 x 321 x 320 23 kg	620 x 321 x 320 23 kg
Print head	145 x 40 x 40, 2 kg	190 x 40 x 40, 2 kg	190 x 40 x 40, 2 kg	90 x 40 x 40, 2 kg	90 x 40 x 40, 2 kg

alphaJET⁵.

alphaJET⁵

Flexibility

Wider ink portfolio for almost every application: high-contrast, sustainable, adhesion properties, special performance, etc.

Smart Start Technology for perfect start-stop performance.

Many state-of-the-art solutions are included as standard.

Integration

Easy integration due to compact design and clever accessories.

Interfaces offer smart integration possibilities into machinery and networks.

Easy integration via wizards and On-Screen help.

Velocity

Highest print speeds.

Ultra fast handling and data processing.

Smart Start Technology for perfect start-stop performance.

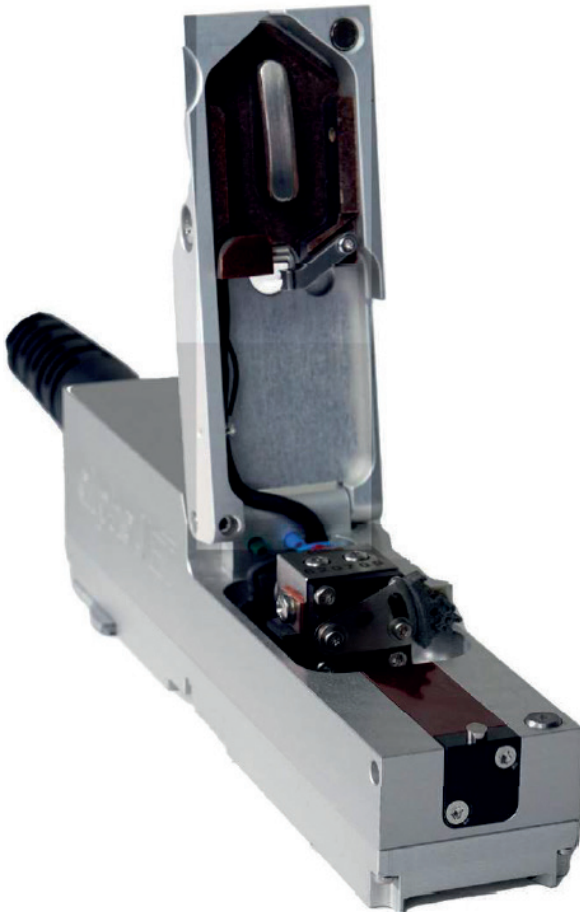
Improved design makes service even faster and easier.

Endurance

Promised service life for 20.000 hours on the pump motor - equivalent to approx. 11 years in single-shift operation.

Extended interval for filter change.

Top result in the TCO*-calculation due to favourable prices for consumables, low solvent consumption and low maintenance operation.



alphaJET Continuous Inkjet printers ensure accurate results and excellent reliability in any application.

Smart-Start-Technology

Motorised nozzle shutter.
Automatic rinsing of the nozzle prevents from drying.
Minimise the cleaning effort.

Active Ink Flow

Ensures optimum ink viscosity. The result is a consistent superior print quality (does not apply to alphaJET mondo).

The **compact design** allows integration even when space is limited.

Thanks to the **modular design**, individual parts are very easy to clean or to exchange.



alphaJET.

Easy integration into your production line.

Unique details and functional accessories make your coding even better.

Display

The large, full-colour touch screen

- Responds in glove mode
- In light or dark mode
- Provides real time information
- Saves time with guided instructions

Like a smartphone - the new, intuitive user interface of the alphaJET5 X can be navigated with swipe gestures.

Software solutions

Extend the alphaJET with a software solution that is convenient for you. Many state-of-the-art solutions are already included as standard with your alphaJET.

Simplify the operation, e.g. with a handheld scanner, to avoid incorrect entries. With one or more modules of the code-M software suite, you can conveniently prepare texts from your desktop, control and monitor your printers.

Supplement your alphaJET with functional accessories

- Handheld scanner
- Camera
- Signal beacon (external)
- Mobile cart
- Cleaning device
- Cable guide unit
- etc.

Camera interface Print & Check

Benefit from the advantages of camera-based production reliability. Combined marking and print control of variable texts and codes in real time; check every single print for presence, legibility and content with Print & Check.

Print head

- Active Ink Flow ensures optimum ink viscosity. The result is a consistent superior print quality
- The compact design allows integration even when space is limited
- Thanks to the modular design, individual parts are very easy to clean or to exchange
- Save unnecessary traversing units and axes by rotating the print image

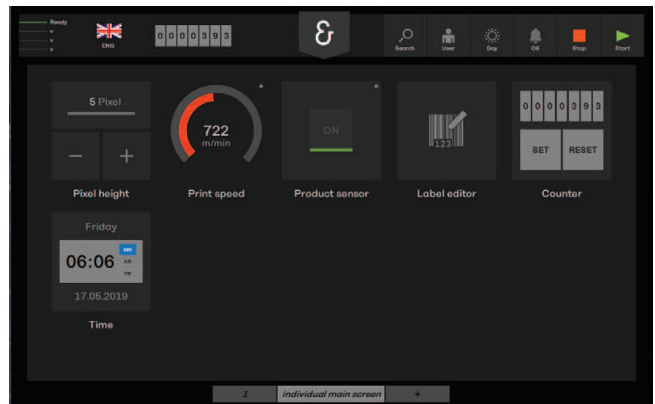
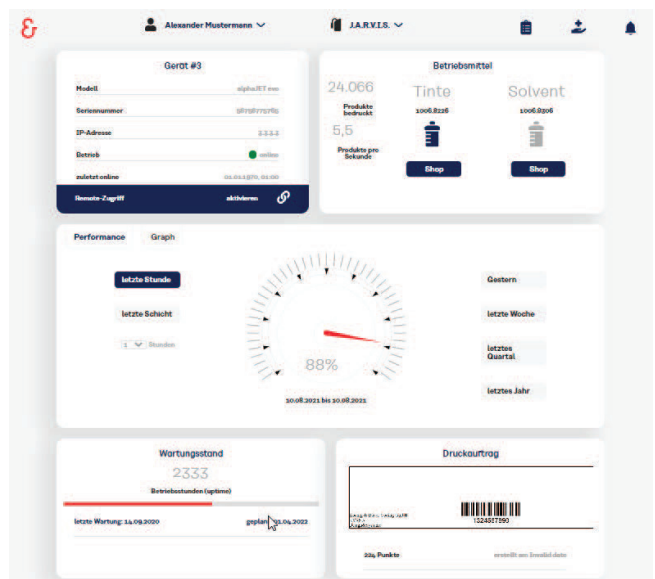


Fig.: User interface alphaJET5 X

Managed Services

All of the current alphaJET systems are compatible for taking advantage of the efficiency-enhancing benefits of our Kyana artificial intelligence. The dashboard shows the printer status clearly and in real time.



alphaJET.

More freedom in coding.

Font / Lines	Print sample
m5	ABCDEFGH 1234567890
m7x5	ABCDEFGH 1234567890
m23	ABCDEFGH 1234567890
m32x24	ABCDEFGH 1234567890
a7x5	ABCDEFGH 1234567890
a9x5	ABCDEFGH 1234567890
a9x6	ABCDEFGH 1234567890
Arial 24	ABCDEFGH 1234567890
Arial 32	ABCDEFGH 1234567890
ocr 11x7	ABCDEFGH 1234567890
2-lines m5	ABCDEFGH 1234567890 ABCDEFGH 1234567890
2-lines m7x5	ABCDEFGH 1234567890 ABCDEFGH 1234567890
2-lines m15	ABCDEFGH 1234567890 ABCDEFGH 1234567890
4-lines m7x5	ABCDEFGH 1234567890 ABCDEFGH 1234567890 ABCDEFGH 1234567890 ABCDEFGH 1234567890

alphaJET.

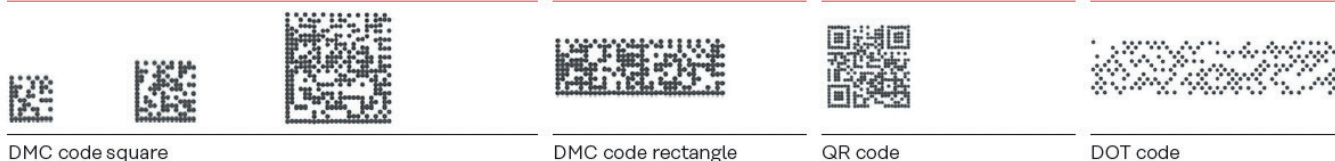
More freedom in coding.

Print samples

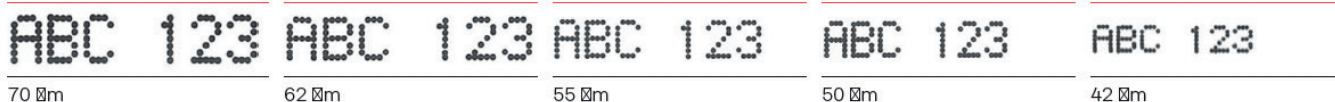
Barcodes / 1D codes



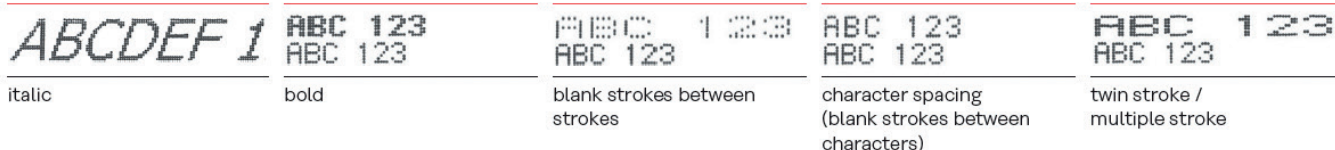
2D codes



Nozzle size



Text variants



Formats



Tower fonts



Languages



Logos



alphaJET.

4 good reasons to choose alphaJET⁵.

01.

Due to the low consumption in combination with affordable prices you can save money.

02.

Highest production reliability. Machine uptime of more than 99 %.

03.

Easy integration and high-speed printing increase your productivity.

04.

The extensive ink portfolio allows you to react flexibly to customer wishes.

alphaJET. A glance at general technical data.

Interfaces

Network (TCP/IP)
RS 232
USB (file-management)
Digital I/O port
Potential-free programmable alarm relay
4-colour signal beacon (option)

Operation

Touch screen, graphical user interface
Adjustable user rights
Modular software code-M
Managed Services
Windows printer driver

Text composition

Product counter (with auto-stop function), time functions
Global Counter (for all print texts)
DataMatrix, QR code, barcodes, DotCode
Characters and logos (BMP-format)
Data fields (can be filled via an interface)
Prompted fields (input prompt)
True Type Fonts (international language and character sets)

Product attributes

Smart Start Technology
RE-SOLVE Ultra (solvent recovery)
User management

Connection values

Mains voltage (AC) 86 - 264 V, 3 10 %
Max. power consumption 0.5 A / 230 V; 1 A / 110 V